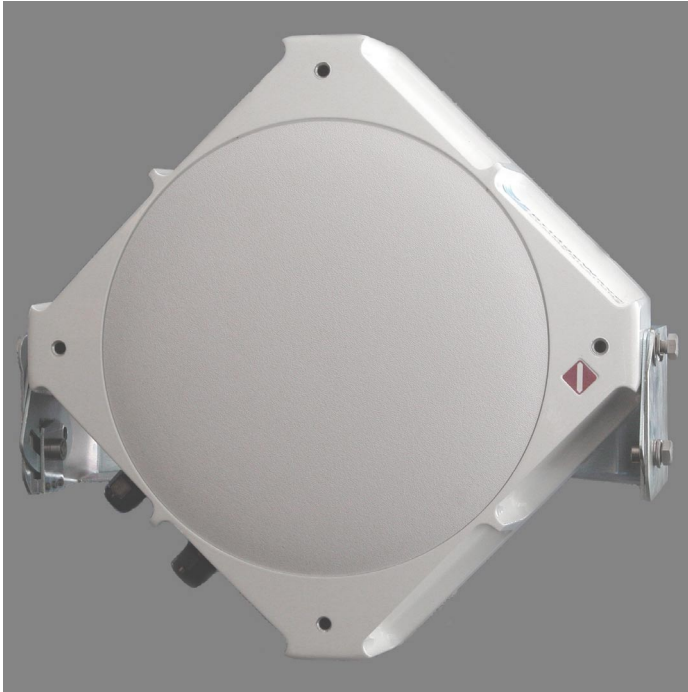




## Wireless Gigabit Ethernet Link Model GE60

### Product Description



### Features

#### **Transparent Network Integration**

- Full rate, full duplex, non-blocking gigabit Ethernet
- Functions as low-latency physical layer repeater
- Works with standard gigabit Ethernet equipment

#### **Operates in 60 GHz Frequency Band**

- License-free operation in U.S.
- Outstanding frequency re-use
- Excellent immunity to interference
- Link distances up to 400-900 meters
- Up to 99.999% availability

#### **User Installable**

- Compact form factor
- Single-box, all-outdoor design
- Mounts on side or roof of building
- Easy-to-use visual alignment mechanism
- No configuration required – “point and link”

### Benefits

- Extends LAN backbones between buildings
- Connects buildings to metro fiber hub sites
- Enables centralization of IT facilities
- Avoids construction costs and delays
- Creates temporary connections
- Creates redundant paths for fiber, copper or free space optic links

### Configurations

- Point-to-point
- Hot standby
- Consecutive point-to-point
- Hub-and-spoke
- Ring
- Mesh

**Product Specifications**

**Operating Frequency**  
 FCC Part 15 Section 255 (ID: RWM-GE60)  
 Low transmit 58.1 GHz  
 High transmit 62.9 GHz  
 Occupied bandwidth 1.4 GHz

**Modulation**  
 BFSK  
 Reed-Solomon (204,188) FEC

**Duplex**  
 Frequency Division Duplex (FDD)

**Integrated Antenna**  
 Type directional cassegrain  
 Polarization linear (horizontal or vertical)  
 Gain 40 dBi

**Latency**  
 < 50 microseconds

**Data Interface**  
 1000Base-SX with LC connectors

Multimode fiber cable lengths:  
 62.5/125 μm 270 meters (max.)  
 50/125 μm 500 meters (max.)

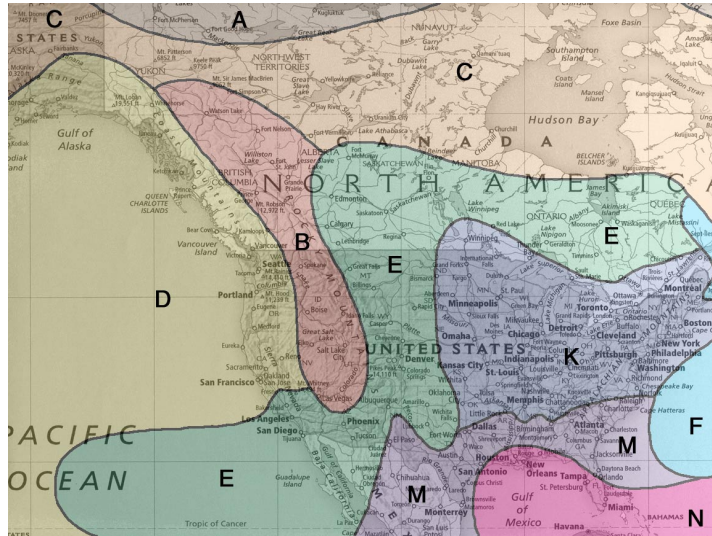
**Power**  
 Indoor supply input 110/220 Vac  
 Indoor supply output +24 Vdc  
 Power cable length 250 meters (max.)  
 Power consumption < 40 watts (w/o cable)

**Mechanical**  
 Size Radio unit: 30w \* 30h \* 12d (cm)  
 Weight Radio unit: 4.5 kg  
 Mounting bracket: 3.0 kg

**Environmental**  
 Operating temperature -30 to +50 deg C  
 Altitude 4,500 meters (max.)  
 Environmental protection IP55

**Installation**  
 Wall and mast mounts provided  
 Visual sight alignment tool  
 Receive signal strength test point for fine adjustment  
 Link quality test point to verify error-free performance  
 Minimum link distance: 20 meters

**North American Rain Zones (ITU Model)**



**Maximum Link Distance (Meters)**

Rain Zone	Required Link Availability		
	99.9%	99.99%	99.999%
<b>A</b>	<b>920</b>	<b>840</b>	<b>725</b>
<b>B</b>	<b>900</b>	<b>800</b>	<b>670</b>
<b>C</b>	<b>875</b>	<b>775</b>	<b>625</b>
<b>D</b>	<b>840</b>	<b>745</b>	<b>625</b>
<b>E</b>	<b>860</b>	<b>725</b>	<b>535</b>
<b>F</b>	<b>840</b>	<b>690</b>	<b>515</b>
<b>K</b>	<b>800</b>	<b>625</b>	<b>470</b>
<b>M</b>	<b>725</b>	<b>555</b>	<b>400</b>
<b>N</b>	<b>655</b>	<b>480</b>	<b>370</b>