

# BT-2010

GPRS Standard Modem with GPS



**RUGGED. RELIABLE. PERFORMANCE.**

## FEATURES

### → Rugged Design

The BT-2010 modem is designed to military (MIL) and automotive (SAE) specifications for ruggedness in harsh environments, including temperature, humidity, vibration and shock. Integrated mounting feet make it suitable for mounting in a vehicle or other harsh environments

### → Dual-Band GPRS including 850 MHz

The BT-20x0 modem supports both North American GPRS frequencies, including 850 MHz.

### → High-Speed Data

The BT-2010 supports GPRS Class 8, meaning it provides the highest possible throughput available on GPRS networks (up to 56 kbps).

### → Maximum Power and Coverage

The BT-2010 modem uses a full-power transceiver and high-efficiency screw-on antenna connector. Users benefit from optimum signal strength and coverage.

### → Standard Communications Protocols

The BT-2010 modem supports:

- ▶ GPRS packet data connections
- ▶ CSD circuit-switched (dial-up) data connections
- ▶ Serial RS-232 (or optional USB adapter)

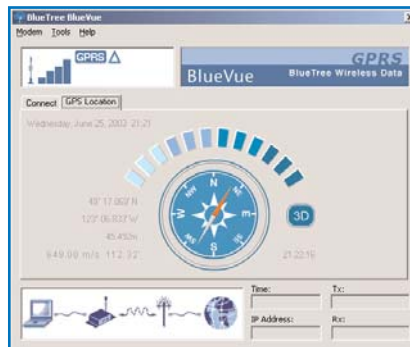
Communications protocols:

- ▶ AT commands
- ▶ PPP

### → Modem Management Software - BlueVue

BlueVue modem management software provides a Windows™-based graphical interface that allows you to:

- ▶ Program the modem
- ▶ Monitor status of connections
- ▶ Initiate connections/data sessions
- ▶ View diagnostic info, such as signal strength, and network status
- ▶ GPS - display and redirection



### → Proven Reliable RF Module

The BT-2010 uses the RIM1902G GPRS RF module. The result is the ultimate in reliability from the industry leaders in GPRS technology.

### → GPS Model

The BT-2010 provides standard GPS. The modem incorporates an internal Trimble Lassen SQ GPS module and supports standard TSIP, TAIP and NMEA 0183 protocols. The GPS information is available on the secondary serial port.

### → Technical Support

Customers benefit from the support of our Value-Added Resellers and from the knowledge of BlueTree's development team. Our 1-year warranty is included, plus optional 3-year extended warranty for total protection.

### → Everything you need. Nothing you don't.

BlueTree focuses exclusively on wireless modems for mobile and industrial applications. The BT-series modem provides all the ruggedness you need without additional features you don't.

## APPLICATION EXAMPLES

- ▶ Police, Fire, EMS and other Emergency Services
- ▶ Public Transit and Transportation
- ▶ Vehicle Tracking - AVL
- ▶ Field Service & Mobile Dispatch
- ▶ Utility Automatic Meter Reading (AMR)
- ▶ Automated machine-to-machine (M2M)
- ▶ Telemetry and SCADA

# BT-2010

## GPRS Standard Modem

**RUGGED. RELIABLE. PERFORMANCE.**



### BT-2010 PRODUCT SPECIFICATIONS

<b>Dimensions</b>	165mm x 89mm x 39mm (6.5" x 3.5" x 1.5") (including mounting feet)
<b>Enclosure</b>	Extruded aluminum; gasket seal; mounting feet & external SIM slot. SIM Card Reader/Slot (GSM1.11; push-in / push-out mechanism)
<b>Power Input and Power Consumption (@ 12VDC - approximate values)</b>	8 - 30 VDC Transmit: 105 mA (770 mA peak), Stand-by: 50 mA, Dormant: 50 mA, Ignition off: 0.4 mA
<b>Air Interface Standards &amp; Frequencies</b>	GSM, GPRS [850/1900 MHz (North American) <-> 900/1800 MHz (European)] Multislot Class 8 (4 downlink, 1 uplink & 5 active slots)
<b>FCC Approval</b>	FCC Part 15, 22 & 24 Class 'B'; Industry Canada ICES-003, RSS-129/ 133
<b>Physical Specification</b>	Temperature: Storage (-40C to +85C) / Operating (-30C to +75C), Humidity 5%-95% (non-condensing), Physical Shock, Vibration, Temperature and Rain; tested & meet MIL-STD-810F/202F and SAE J1455
<b>RF Power Output</b>	1 watt @ 1900 MHz / 0.8 watt @ 850 MHz (North American) 1 watt @ 1800 MHz / 2 watt @ 900 MHz (European)
<b>Sensitivity</b>	-107 dB @ BER 2.2439%
<b>Antenna and Data Interface</b>	Antenna (TNC) <-> Data (RS232 / DB-9) <-> GPS Antenna (SMA) 3.3volts. <-> GPS Data (DB9)
<b>Programming</b>	BlueVue Modem Management Software (Windows 2000/XP) & Standard AT Commands
<b>Model Specific Features</b>	Embedded RF Module: Research In Motion RIM1902G (North America) or RIM1802G (European)

### Application Example

