

ConnexModem & ConnexPC

**User's Manual
Version 1.0**



Copyright Information

Copyright © 2001 AEROCOMM, Inc. All rights reserved. The information contained in this manual and the accompanying software programs are copyrighted and all rights are reserved by AEROCOMM, Inc. AEROCOMM, Inc. reserves the right to make periodic modifications of this product without obligation to notify any person or entity of such revision. Copying, duplicating, selling, or otherwise distributing any part of this product without the prior consent of an authorized representative of AEROCOMM, Inc. is prohibited.

All brands and product names in this publication are registered trademarks or trademarks of their respective holders.

This material is preliminary

Information furnished by AEROCOMM in this specification is believed to be accurate. Devices sold by AEROCOMM are covered by the warranty and patent indemnification provisions appearing in its Terms of Sale only. AEROCOMM makes no warranty, express, statutory, and implied or by description, regarding the information set forth herein. AEROCOMM reserves the right to change specifications at any time and without notice.

AEROCOMM's products are intended for use in normal commercial applications. Applications requiring extended temperature range or unusual environmental requirements such as military, medical life-support or life-sustaining equipment are specifically not recommended without additional testing for such application.

Limited Warranty

For a period of one (1) year from the date of purchase, AEROCOMM warrants the transceiver against defects in materials and workmanship. AEROCOMM will not honor this warranty (and this warranty will be automatically void) if there has been any:

- (1) Tampering, signs of tampering, or opening the transceiver's case.
- (2) Use of AC power adapters and cables other than those originally supplied with the transceivers.
- (3) Repair or attempt to repair by anyone other than an AEROCOMM authorized technician.

This warranty does not cover and AEROCOMM will not be liable for, any damage or failure caused by misuse, abuse, acts of God, accidents, electrical irregularity, or other causes beyond AEROCOMM's control, or claim by other than the original purchaser.

FCC Information

FCC Notice



WARNING: This device complies with Part 15 of the FCC Rules. Operation is subject to the following two conditions: (1) This device may not cause harmful interference and (2) This device must accept any interference received, including interference that may cause undesired operation.

RF Exposure (For 200mW units only: Part Numbers CM200, CM200A, CPC200, CPC200A)



WARNING: To satisfy FCC RF exposure requirements for mobile and base station transmitting devices, a separation distance of 32cm or more should be maintained between the antenna of this device and persons during operation. To ensure compliance, operations at closer than this distance is not recommended.

The preceding statement must be included as a CAUTION statement in manuals for OEM products to alert users on FCC RF Exposure compliance.

Table of Contents

1. OVERVIEW5

 1.1 CONNEXMODEM & CONNEXPC DEFINITIONS5

2. WINDOWS MODEM SETUP & CONFIGURATION.....5

3. TROUBLESHOOTING.....9

1. Overview

The ConnexModem and ConnexPC products provide a wireless point-to-point connection between a RS232 device and a 56K data/fax modem.

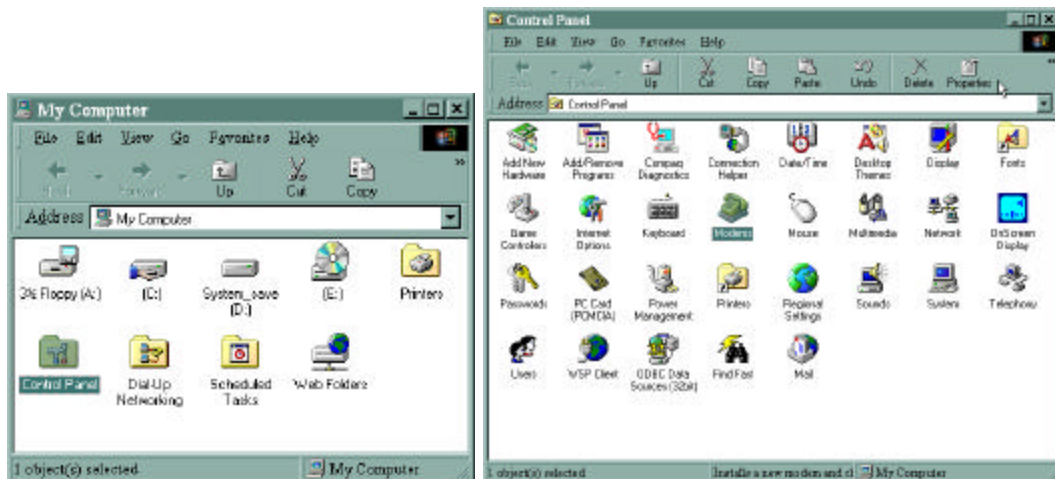
1.1 ConnexModem & ConnexPC Definitions

1. **Pwr:** Red LED indicates power is connected to the unit.
2. **Link:** Green LED indicates the units are in range of one another.
3. **Rx:** Red LED indicates a unit is receiving data.
4. **Tx:** Green LED indicates a unit is sending data.
5. **Dual RJ11 Jack:** There are 2 standard telephone jacks on the ConnexModem unit. The phone line can be connected to either jack. The other jack can be connected to a telephone.

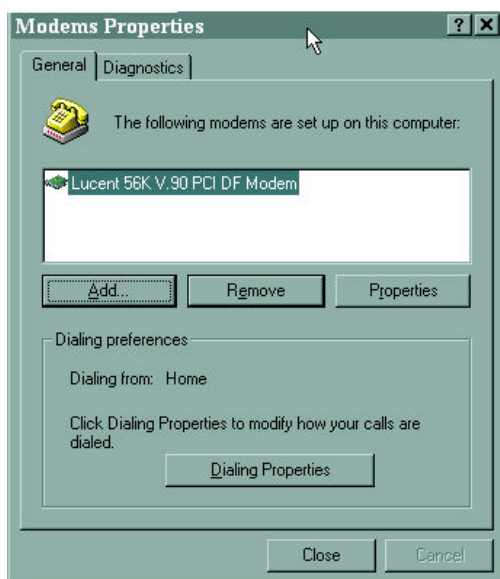
2. Windows Modem Setup & Configuration

When connecting the ConnexPC to a computer running Windows 95, 98, Me, 2000, or NT, the correct modem driver must be installed and properly configured. Please follow the steps and diagrams below to complete the setup and configuration.

1. Double-click on **My Computer** on the desktop, double-click on **Control Panel**, double-click **Modems** to display the **Modems Properties** window.



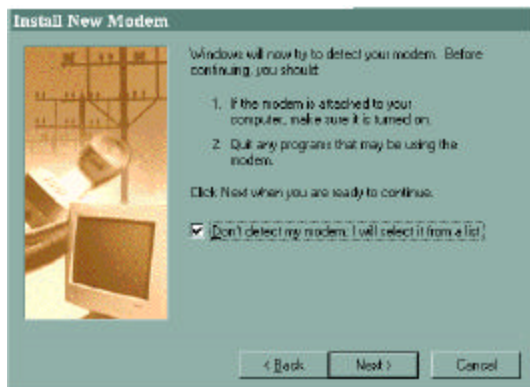
2. If the **Standard 56000 bps K56Flex Modem** is not installed, click **Add...** to install a new modem.



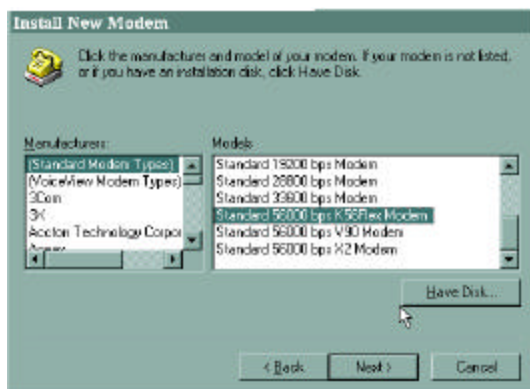
3. Select **Other** when asked what type of modem you want to install, then click on **Next>**.



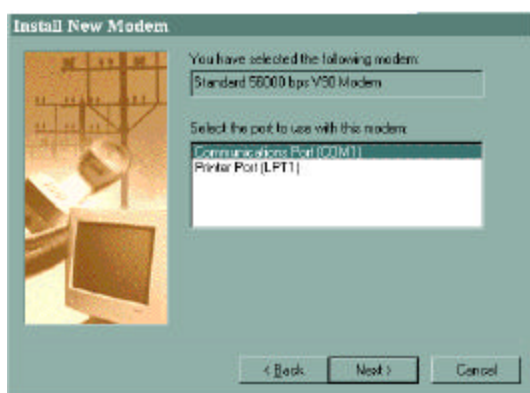
4. Select **"Don't detect my modem; I will select it from a list"**. Then select **Next>**.



5. Select “**(Standard Modem Types)**” from the Manufacturers list, then select “**Standard 56000 bps K56Flex Modem**” from the Models list. Click **Next>** to continue.



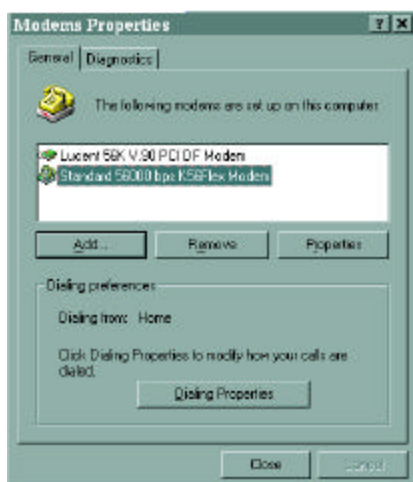
6. Select the port to use with the modem and click **Next>** to continue.



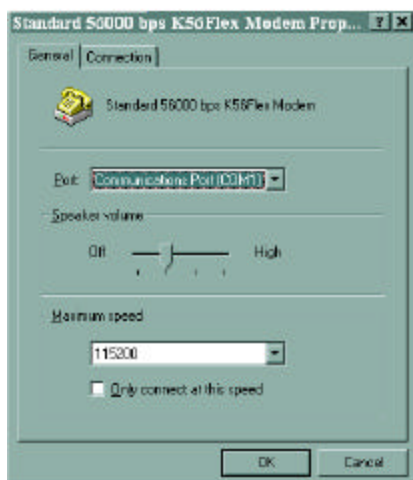
7. Wait while Windows installs the modem. Click **Finish** to complete the installation of the new modem and to return to the **Modems Properties** window.



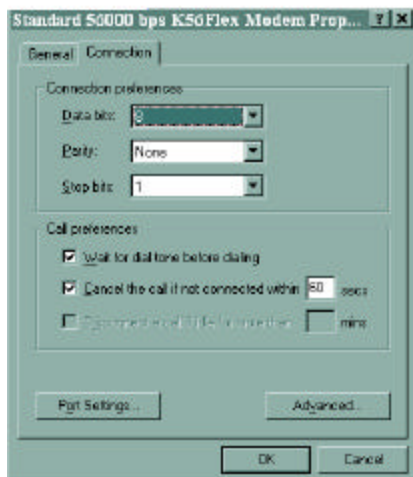
8. You are now ready to configure the new modem. Select **“Standard 56000 bps K56Flex Modem”** and then click **Properties**.



9. On the **General** tab, select the port that is connected to the ConnexPC unit. Select **115200** for the Maximum speed. **Do not select “Only connect at this speed”**, as this will not allow communications from the ConnexPC unit to the ConnexModem unit.



10. Click the **Connection** tab. Select **8** Data bits, **None** for Parity, **1** for Stop bits. Select **“Wait for dial tone before dialing”**. Selecting **“Cancel the call if not connected within xx secs”** is optional.



11. Click **Advanced...** to continue. Select **"Use flow control"** and then select **"Hardware (RTS/CTS)"**. Click **OK** to return to the **Standard 56000 bps K56Flex Modem Properties** window. Click **OK** to return to the **Modems Properties** window. Click **Close** to complete the configuration.

