

BT-2000

GPRS Standard Modem



RUGGED. RELIABLE. PERFORMANCE.

FEATURES

→ Rugged Design

The BT-2000 modem is designed to military (MIL) and automotive (SAE) specifications for ruggedness in harsh environments, including temperature, humidity, vibration and shock. Integrated mounting feet make it suitable for mounting in a vehicle or other harsh environments

→ Dual-Band GPRS including 850 MHz

The BT-2000 modem supports both the North American 1900MHz GPRS frequency and 850 MHz.

→ High-Speed Data

The BT-2000 supports GPRS Class 8, meaning it provides the highest possible throughput available on GPRS networks (up to 56 kbps).

→ Maximum Power and Coverage

The BT-2000 modem uses a full-power transceiver and high-efficiency screw-on antenna connector. Users benefit from optimum signal strength and coverage.

→ Standard Communications Protocols

The BT-2000 modem supports:

- ▶ GPRS packet data connections
- ▶ CSM circuit-switched (dial-up) data connections
- ▶ Serial RS-232 (or optional USB adapter)

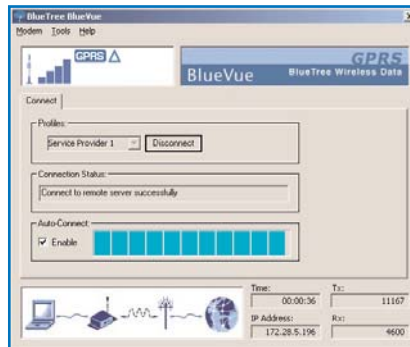
Communications protocols:

- ▶ AT commands
- ▶ PPP

→ Modem Management Software - BlueVue

BlueVue modem management software provides a Windows™-based graphical interface that allows you to:

- ▶ Program the modem
- ▶ Monitor status of connections
- ▶ Initiate connections/data sessions
- ▶ View diagnostic info, such as signal strength, and network status



→ Proven Reliable RF Module

The BT-2000 uses the RIM 1902G GPRS module. The result is the ultimate in reliability from the industry leaders in GPRS technology.

→ GPS Model

BlueTree also offers models that provide standard GPS using an internal Trimble Lassen SQ module. Contact BlueTree for details.

→ Technical Support

Customers benefit from the support of our Value-Added Resellers and from the knowledge of BlueTree's development team. Our 1-year warranty is included, plus optional 3-year extended warranty for total protection.

→ AutoConnect and AutoReconnect

BlueVue's AutoConnect feature automatically establishes a wireless data connection. If the data link is dropped due to loss of service or poor reception, BlueVue's AutoReconnect will automatically re-establish the data link. No more need to check the screen and manually click a button.

APPLICATION EXAMPLES

- ▶ Police, Fire, EMS and other Emergency Services
- ▶ Public Transit and Transportation
- ▶ Vehicle Tracking - AVL
- ▶ Field Service & Mobile Dispatch
- ▶ Utility Automatic Meter Reading (AMR)
- ▶ Automated machine-to-machine (M2M)
- ▶ Telemetry and SCADA

BT-2000

GPRS Standard Modem



RUGGED. RELIABLE. PERFORMANCE.

BT-2000 PRODUCT SPECIFICATIONS

Dimensions	165mm x 89mm x 39mm (6.5" x 3.5" x 1.5") (including mounting feet)
Enclosure	Extruded aluminum; gasket seal; mounting feet and weather sealed external SIM slot, SIM Card Reader/Slot (GSM11.11; push-in / push-out mechanism)
Power Input and Power Consumption (@ 12VDC - approximate values)	8 - 30 VDC Transmit: 95 mA (770 mA peak), Stand-by: 40 mA, Dormant: 40 mA, Ignition off: 0.4 mA
Air Interface Standards & Frequencies	GSM, GPRS [850/1900 MHz (North American) < > 900/1800 MHz (European)] Multislot Class 8 (4 downlink, 1 uplink & 5 active slots)
FCC Approval	FCC Part 15, 22 & 24 Class 'B'; Industry Canada ICES-003
Physical Specification	Temperature: Storage (-40C to +85C) / Operating (-40C to +85C), Humidity 5%-95% (non-condensing), Physical Shock, Vibration, Temperature and Rain; tested & meet MIL-STD-810F/202F and SAE J1455
RF Power Output	1 watt @ 1900 MHz / 0.8 watt @ 850 MHz (North American)
Sensitivity	-107 dB @ BER 2.2439%
Antenna and Data Interface	Antenna (TNC) < > Data (RS232 / DB-9)
Programming	BlueVue Modem Management Software (Windows 2000/XP) & Standard AT Commands
Model Specific Features	Embedded RF Module: Research In Motion RIM1902G (North America)

Application Example

